



## GLAMPINGS

### Glamping Modules by TechnoPlace

Investing in the Future of  
Tourism

# Sustainable Solutions for High-Growth Markets in Asia, Middle East & Africa

## Introduction:

Global investors are shifting focus from Western markets to emerging economies. TechnoPlace offers unique glamping solutions that combine profitability, sustainability, and rapid deployment.

## Challenge & Solution

### Western Economic Challenges:

- Inflation, high interest rates, debt burdens
- Growing investor risks

### Our Offer:

- Glamping modules as a demand-driven solution for new markets.
- Key Advantage: Fast ROI (Return on Investment) + minimal environmental impact.



## Company

TechnoPlace (Dubai) specializes in prefabricated glamping modules for emerging markets.

- Expert team (including Canadian engineers) in modular tourism solutions.
- In-house R&D + manufacturing in China.
- Custom designs for local requirements.
- Durable modules for harsh environments, delivering premium outdoor comfort.

## Product Overview

### Self-Contained Glamping Module

- Full amenities: Bathroom (shower, toilet, sink) + compact kitchen + built-in storage.
- Flexible utilities: Connects to central systems or off-grid solutions (bio-toilets, solar panels, boilers).

## Key Benefits

### Delivery

- Flat-pack design for easy transport to remote locations.
- Compact logistics minimize ecological footprint.

### Installation

- IKEA-style assembly with labeled components.
- 2–3 day setup by 3-person crew (no heavy machinery).
- No concrete foundation required (recommended: screw piles).

### Site Prep

- Requires only basic utilities (water, power, sewage).
- Optional: On-site assistance by our technicians.

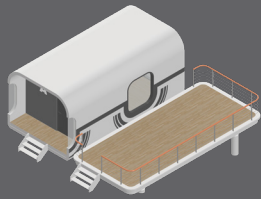
## What is Glamping?

A hybrid of camping and hotel luxury, blending nature immersion with modern amenities.

Ideal for:

- Commercial eco-resorts
- Corporate retreat parks
- Sports training camps (summer/winter)
- Children's recreational camps
- Nature-integrated wellness SPA zones
- Military rehabilitation facilities
- Private countryside residences

# Module Type A



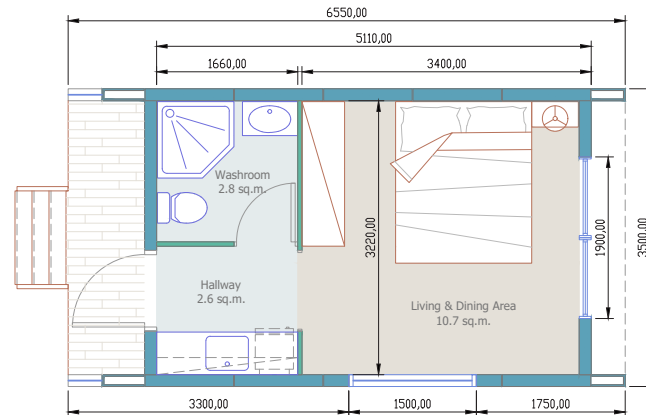
Capacity: 1–2 guests

Total area: 23 m<sup>2</sup>

Living space: 16 m<sup>2</sup>

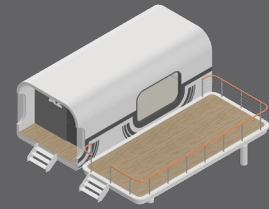
Includes:

Wet bathroom, kitchenette,  
built-in wardrobes.





## Module Type A2



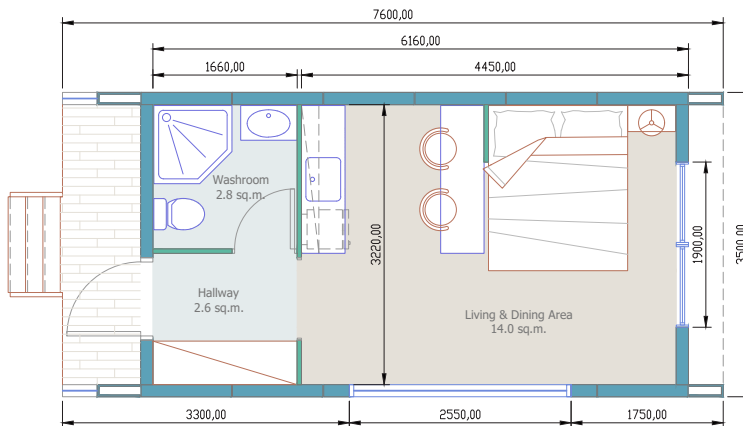
Capacity: 1–3 guests (comfort)

Total area: 26.6 m<sup>2</sup>

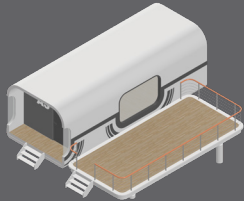
Living space: 19.4 m<sup>2</sup>

Includes:

Wet bathroom, kitchenette,  
built-in wardrobes.



# Module Type A3



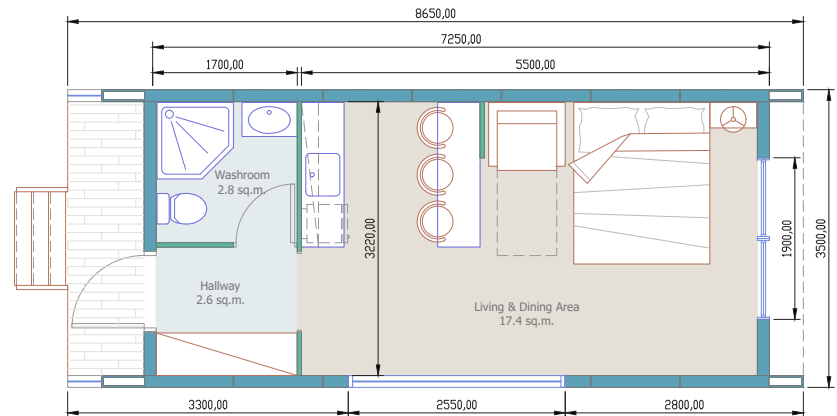
Capacity: 3-4 guests

Total area: 30.7 m<sup>2</sup>

Living space: 22.8 m<sup>2</sup>

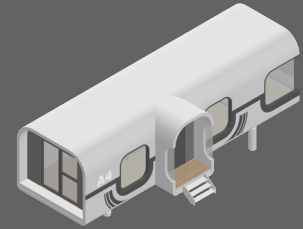
Includes:

Wet bathroom, kitchenette,  
built-in wardrobes.





# Module Type A4



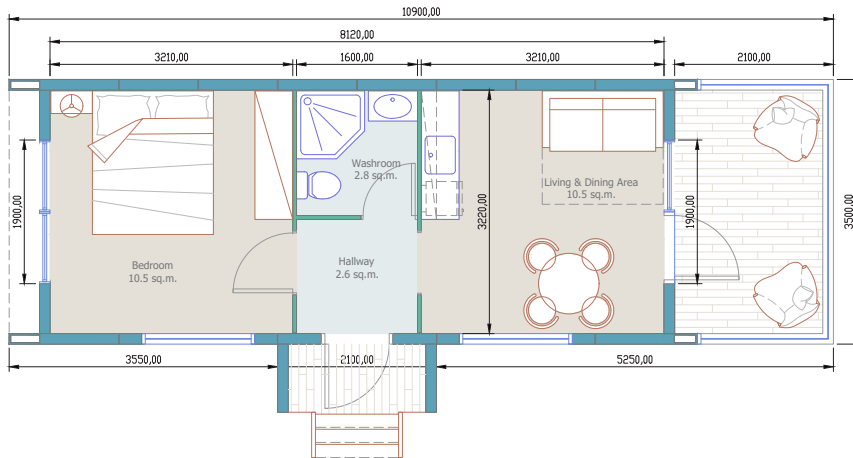
Capacity: family or up to 6 guests

Total area: 38.2 m<sup>2</sup>

Living space: 33 m<sup>2</sup>

Includes:

Wet bathroom, kitchenette,  
built-in wardrobes, integrated  
deck



# Technical Details

## Wall Panels

### Structure:

#### Inner layer:

High-density shockproof insulation.

Powder-coated steel (custom colors/textures: wood, stone, etc.).

#### Advantages:

100% waterproof/UV/temperature-resistant.

Decades-long durability.

Interior: Metal + textile finishes (cozy yet rugged).

Component	Specification
Frame	Galvanized steel rectangular profile (80×50 mm, bolt-assembled).
Enclosure	Wall thickness: 140 mm
Exterior panel	1–2 mm corrugated steel sheets
Interior panel	1–2 mm corrugated steel sheets + textile appliqué.
Multi-layer insulation	40 mm protective facing (outer) 60 mm rigid PIR core (150 kg/m <sup>3</sup> ) 40 mm interior barrier
Flooring (base layer)	Galvanized steel + waterproof formaldehyde-treated plywood.
Flooring (finish layer)	12 mm laminate (4 style options).
Bathroom	Porcelain tiles (2 marble-style finishes).
Insulation	100 mm rigid PIR core (150 kg/m <sup>3</sup> )

## Technical Details

Component	Specification
Windows	Insulated glass unit (IGU) in anodized aluminum frame
Main door	Insulated multi-layer with aluminum frame + mosquito net.
Bathroom door	Acrylic with aluminum frame.
Power	External cable routing (220V outlets in strategic locations). Built-in LED lighting (walls/ceiling). Pre-installed AC lines.
Water & Sewage	Central hookup: Pre-fitted plumbing/sewage ports. Off-grid: Bio-toilets, solar water heaters, portable tanks.
Climate Control	Heated floors + optional AC.

# TechnoPlace Modular Hotel Advantages

## 1. Speed, Savings & Flexibility

3x Faster Launch: Open hotels 2-3x quicker than traditional construction – critical for seasonal resorts or high-demand locations.

- Seamless Expansion: Add rooms in days without disrupting guests.
- Budget Control: Fixed module costs eliminate construction surprises.
- Eco-Friendly Logistics: No cranes or concrete mixers – quiet, clean assembly.

## 2. Bulletproof Durability: 20+ Years

Factory-Perfected: Rigorous quality control in manufacturing.

- All-Weather Resilience: Powder-coated stainless steel frames resist humidity, frost, and UV.
- Zero Maintenance: No repainting or recladding – save on upkeep.
- Safety Certified: Earthquake-tested for protected areas and rugged terrain.

## 3. Marketing Edge: Stand Out & Earn More

- Media Magnet: Instagrammable designs attract press and influencers.
- Premium Appeal: Guests pay more for eco-tech luxury.
- Revenue Boosters:

- Winter-ready: Heated floors + remote climate control.
- Resale Value: Modules can be sold separately from land.
- Grants: Up to 30% government subsidies in some regions.

#### 4. Future-Proof Mobility

- Relocate Easily: Adapt to changing demand or lease terms.
- Scale Smart: Start with 5 units, expand to a full eco-resort.

Bottom Line: More than “fast cabins” – this is hospitality reimagined, where time, profit, and sustainability work together.

## TechnoPlace Modular Hotel Advantages

## Contact Us

Al Shmookh Business Center  
M 1003, One UAQ  
UAQ Free Trade Zone  
Umm Al Quwain, U.A.E.

P.O. Box number 283096  
Tel. +971-58-502-56-02

Web: [www.technoplace.ae](http://www.technoplace.ae)  
E-mail: [info@technoplace.ae](mailto:info@technoplace.ae)

